



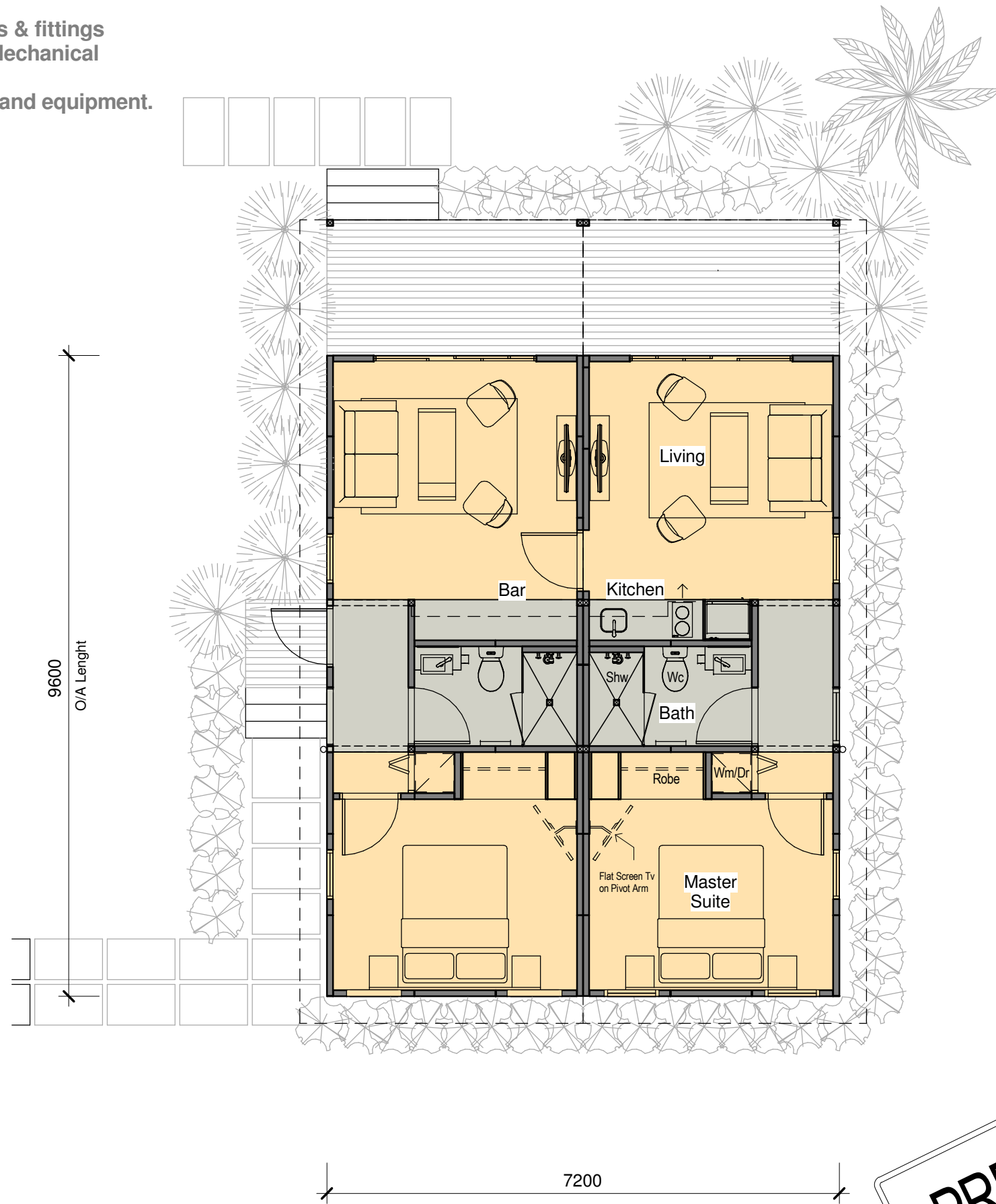
**MiiHome - 1 Bedroom Flat Duplex Type C - Flatpack**

Schematic Design 07.05.15



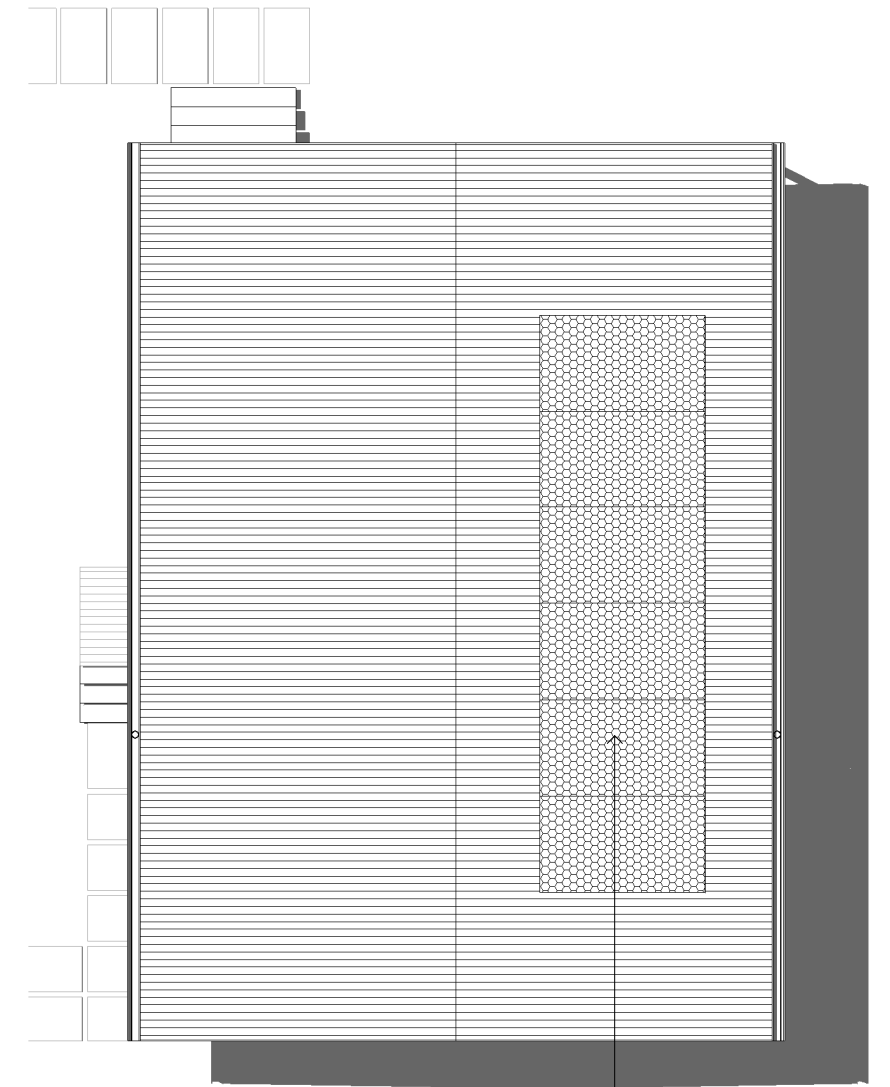
**Exclusions to be Supplied & Installed by others.**

- 1) Wet area seal
- 2) Plumbing fixtures & fittings
- 3) All electrical & Mechanical
- 4) Floor coverings
- 5) Furniture, fitout and equipment.



**1 Level 1 Plan**  
1 : 75

NOTE: "The concept design drawing(s) illustrated in this document are for the purpose of developing & communicating the general design intent. All hard and soft landscape elements, internal and external FF&E, are NOT included or form part of MiiHome scope of works unless specifically noted."



**2 Roof Plan**  
1 : 100

**1.5Kw System**  
6x250W Solar panels  
1x1.5 Kw Inverter  
To North Facing Roof Only -  
INDICATIVE ONLY

PRELIMINARY

**Ecologically Sustainable Development Initiatives**

- 1.5 Kw - Solar System - Expected Annual Generation per Villa to be Approx 244 MWh - All energy not used while flat is empty to be send back to local grid.
- 4000 Litre Rain Water Harvesting Tank to service the Wc- Showers and/or Garden irrigation.
- In Situ Materials - Decking to be Recycled plastic Eco- Decking - Waste Free - Low Maintenance - UV Resistant - Mould / Termite Resistant
- Modular - Insulated Panel Building - Great Thermal Properties - Recyclable Buildings and components - Build in factory controlled environment with waste management procedures in place.
- LED lighting - LED Lights use only 15% of the energy a standard halogen uses, provide up to 85% of the light output and create less heat and are cool to touch. This makes LED Lights energy efficient are cost effective as air conditioning use can be lowered.
- Water Smart Fixtures - All Taps should be WELS rated to 4 or more stars to reduce overall water consumption of the Resort
- Only Low VOC Paints and adhesives are used on Module/ Materials Construction - This can be controlled on a Factory Enviroment.



"This work is exclusively owned by Pearls MiiHome and cannot be reproduced or copied, either wholly or in part, in any form (graphic, electronic or mechanical, including photocopying) without the written permission of Pearls MiiHome."



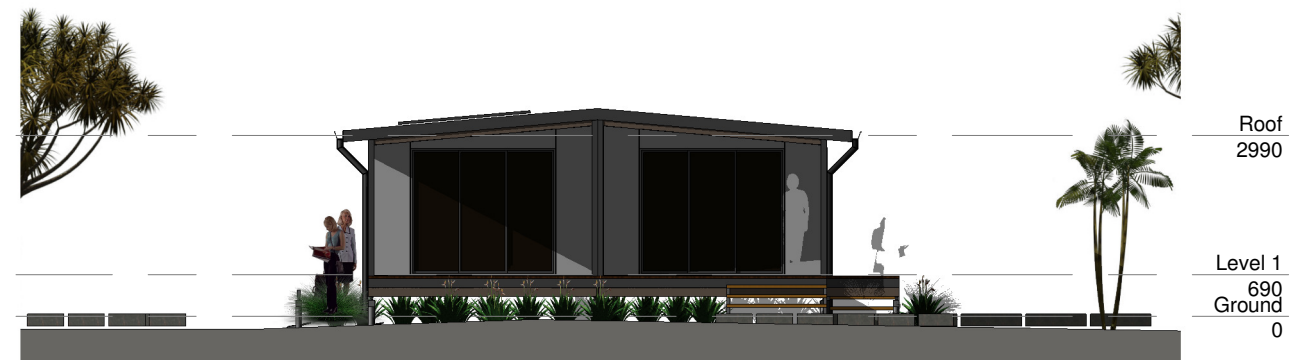
1 Elevation 1  
1 : 125



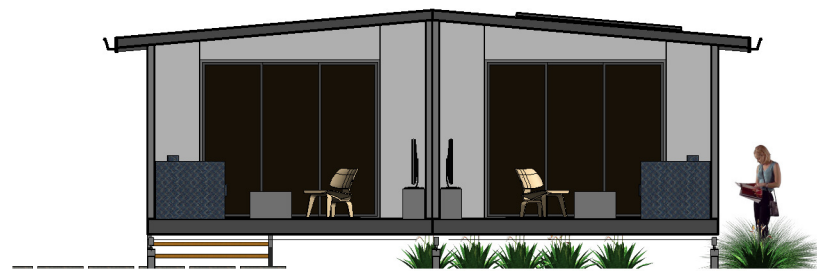
2 Elevation 2  
1 : 125



3 Elevation 3  
1 : 125



4 Elevation 4  
1 : 125



5 Section 3  
1 : 100



6 Section 4  
1 : 100

NOTE: "The concept design drawing(s) illustrated in this document are for the purpose of developing & communicating the general design intent. All hard and soft landscape elements, internal and external FF&E, are NOT included or form part of MiiHome scope of works unless specifically noted."

**PRELIMINARY**



"This work is exclusively owned by Pearls MiiHome and cannot be reproduced or copied, either wholly or in part, in any form (graphic, electronic or mechanical, including photocopying) without the written permission of Pearls MiiHome."